

**CEA**<sup>®</sup>

SINCE 1999



**CB FC CE**



**ES Power Station**

**Safe Reliable Long Life**

**2026**

**CEA ELECTRIC CO.,LTD**

# Company Profile

CEA ELECTRIC CO.,LTD



CEA Electric Co.,Ltd., founded in 2008, is a company focusing on energy storage power supply and solutions, integrating product R & D, production and sales. It is rewarded as national green factory, national green supply chain enterprise, national "little giant company" (focus on a market niche and master key technologies with strong innovation capacity), national high-tech enterprise and national intellectual property advantage enterprise.

CEA is a global leader in the fields of photovoltaic energy storage integration and off-grid independent power supply systems. It provides energy storage products with stable performance and excellent quality and integrated after-sales services in remote areas or in the environment where mains electricity cannot be accessed, so as to provide customers with reliable living power guarantee.

The lithium iron phosphate battery portable outdoor energy storage power supply and household emergency energy storage power supply developed by CEA have obtained the certificates of ETL, TUV and PSE, etc. They have the characteristics of safety and reliability, ultra-long life span, multi-way charging, long battery life, and environmental protection.

We believe that CEA energy storage off-grid power supply system is one of the best programs to meet people's independent power supply needs, and it contributes to clean energy, low-carbon, environmental protection and realization of human sustainable development.

# CEA®



# CB FC CE

# Certification

## Portable Power Station

**intertek** Total Quality Assured **AUTHORIZATION TO MARK**

This authorizes the application of the Certification Mark(s) shown below to the models described in the Product(s) Covered section when made in accordance with the conditions set forth in the Certification Agreement and Listing Report. This authorization also applies to multiple listed model(s) identified on the correlation page of the Listing Report.

This document is the property of Intertek Testing Services and is not transferable. The certification mark(s) may be applied only at the location of the Party Authorized To Apply Mark.

**Applicant:** CEA ELECTRIC CO.,LTD  
55th Dingde Road,  
Fuyang Industrial Zone,  
Yingqian District,  
FUYANG Anhui Province 230000  
**Country:** CHINA

**Manufacturer:** CEA ELECTRIC CO.,LTD  
55th Dingde Road,  
Fuyang Industrial Zone,  
Yingqian District,  
FUYANG Anhui Province 230000  
**Country:** CHINA

**Party Authorized To Apply Mark:** Same as Manufacturer  
**Report Issuing Office:** Intertek Testing Services Shenzhen Limited Longhua Branch  
**Control Number:** 5009502 **Authorized by:** [Signature] for L. Matthew Snyder, Certification Manager

This document supersedes all previous Authorizations to Mark for the noted Report Number.

**Standard(s):** Portable Power Packs (ANSI/CAN/UL 2743-2016 Ed 2+R 30Apr2020)  
**Product:** Portable Power Station  
**Model(s):** EA200-S18WH-1YE EA200-S18WH-1GN EA200-S18WH-1BK

ATM for Report 22061403382N-001 Page 1 of 1 ATM Issued: 8-Sep-2022

**intertek** Total Quality Assured **AUTHORIZATION TO MARK**

This authorizes the application of the Certification Mark(s) shown below to the models described in the Product(s) Covered section when made in accordance with the conditions set forth in the Certification Agreement and Listing Report. This authorization also applies to multiple listed model(s) identified on the correlation page of the Listing Report.

This document is the property of Intertek Testing Services and is not transferable. The certification mark(s) may be applied only at the location of the Party Authorized To Apply Mark.

**Applicant:** CEA ELECTRIC CO.,LTD  
55th Dingde Road,  
Fuyang Industrial Zone,  
Yingqian District,  
FUYANG Anhui Province 230000  
**Country:** CHINA

**Manufacturer:** CEA ELECTRIC CO.,LTD  
55th Dingde Road,  
Fuyang Industrial Zone,  
Yingqian District,  
FUYANG Anhui Province 230000  
**Country:** CHINA

**Party Authorized To Apply Mark:** Same as Manufacturer  
**Report Issuing Office:** Intertek Testing Services Shenzhen Limited Longhua Branch  
**Control Number:** 5009502 **Authorized by:** [Signature] for L. Matthew Snyder, Certification Manager

This document supersedes all previous Authorizations to Mark for the noted Report Number.

**Standard(s):** Portable Power Packs (ANSI/CAN/UL 2743-2016 Ed 2+R 30Apr2020)  
**Product:** Portable Power Station  
**Model(s):** EA1000-1260WH-1YE EA1000-1260WH-1GN EA1000-1260WH-1BK

ATM for Report 22061403462N-001 Page 1 of 1 ATM Issued: 16-Sep-2022

**intertek** Total Quality Assured **AUTHORIZATION TO MARK**

This authorizes the application of the Certification Mark(s) shown below to the models described in the Product(s) Covered section when made in accordance with the conditions set forth in the Certification Agreement and Listing Report. This authorization also applies to multiple listed model(s) identified on the correlation page of the Listing Report.

This document is the property of Intertek Testing Services and is not transferable. The certification mark(s) may be applied only at the location of the Party Authorized To Apply Mark.

**Applicant:** CEA ELECTRIC CO.,LTD  
55th Dingde Road,  
Fuyang Industrial Zone,  
Yingqian District,  
FUYANG Anhui Province 230000  
**Country:** CHINA

**Manufacturer:** CEA ELECTRIC CO.,LTD  
55th Dingde Road,  
Fuyang Industrial Zone,  
Yingqian District,  
FUYANG Anhui Province 230000  
**Country:** CHINA

**Party Authorized To Apply Mark:** Same as Manufacturer  
**Report Issuing Office:** Intertek Testing Services Shenzhen Limited Longhua Branch  
**Control Number:** 5009502 **Authorized by:** [Signature] for L. Matthew Snyder, Certification Manager

This document supersedes all previous Authorizations to Mark for the noted Report Number.

**Standard(s):** Portable Power Packs (ANSI/CAN/UL 2743-2016 Ed 2+R 30Apr2020)  
**Product:** Portable Power Station  
**Model(s):** EA1000-1440WH-1YE EA1000-1440WH-1GN EA1000-1440WH-1BK

ATM for Report 22061403882N-001 Page 1 of 1 ATM Issued: 16-Sep-2022

**TCB** **GRANT OF EQUIPMENT AUTHORIZATION** **TCB**

**Certification**  
Issued Under the Authority of the  
Federal Communications Commission  
By:  
NICOM Labs  
876 Boulder Court  
Pleasanton, CA 94566  
Date of Grant: 07/11/2022  
Application Dated: 07/11/2022

**CEA ELECTRIC CO.,LTD**  
No.88 Dingde Road, Yingqian Economic  
Development Zone, Fuyang Anhui,  
China

Attention: Jingzhen Wu, Technical Manager

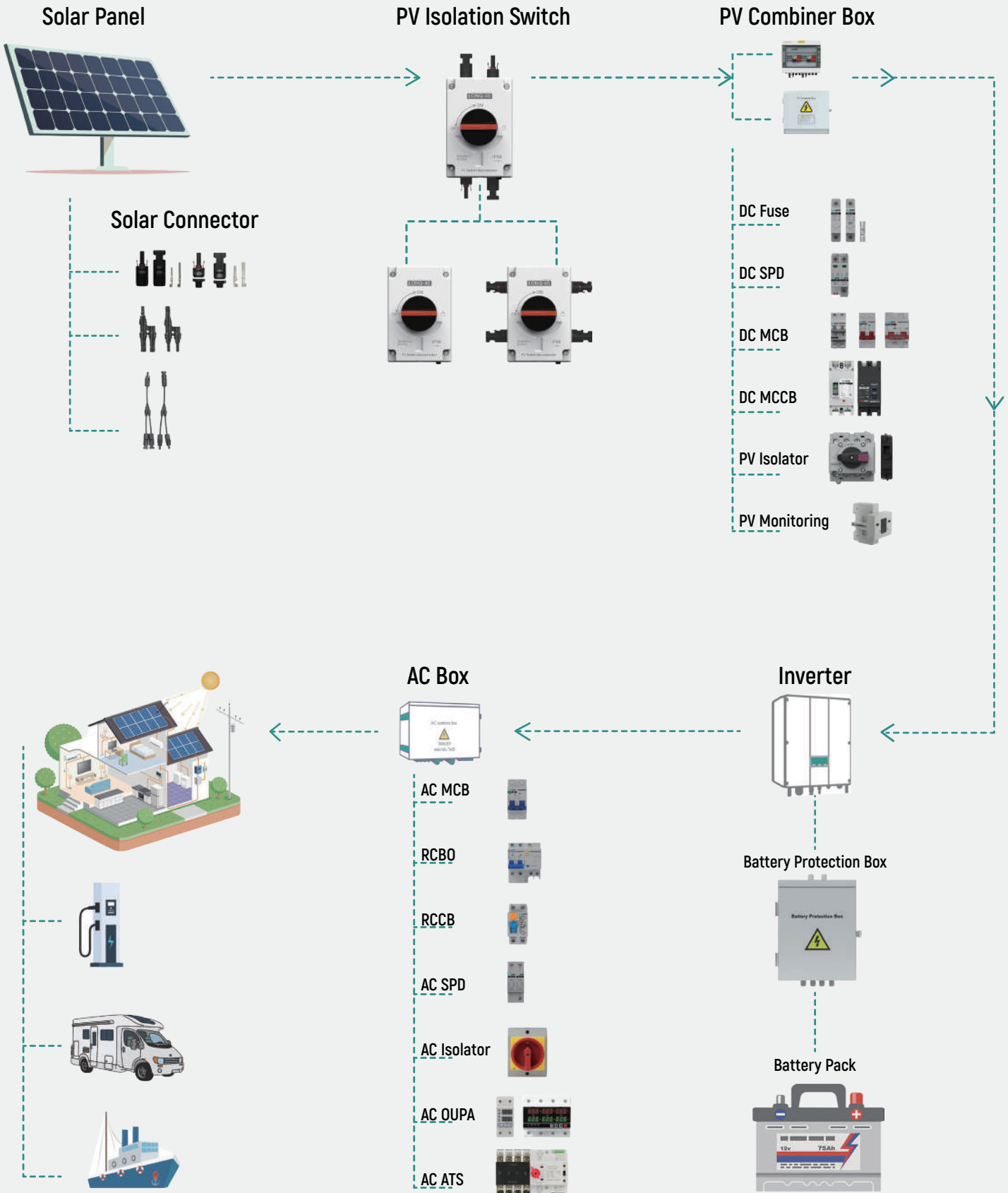
**NOT TRANSFERABLE**  
EQUIPMENT AUTHORIZATION is hereby issued to the named GRANTEE, and is  
VALID ONLY for the equipment identified hereon for use under the Commission's  
Rules and Regulations listed below.

**FCC IDENTIFIER:** 2AGZZ-5A1000  
Name of Grantee: CEA ELECTRIC CO.,LTD  
Equipment Class: Part 15 Low Power Transmitter Below 1500 MHz  
Notes: Portable Power Station

Grant Model	FCC Rule Parts	Frequency Range (MHz)	Output Watts	Frequency Tolerance	Station Designator
	15C	6.115 - 6.285			

ATM for Report 22061403882N-001 Page 1 of 1 ATM Issued: 16-Sep-2022

# PV SYSTEM SOLUTIONS



## Mobile Power Station



PV Charging



Charge 4 devices  
at the same time



LiFePO4  
Safe and Durable



Plug and play



Product parameter	300W	600W	1000W	1000W
Model	ES300-268WH	ES600-604WH	ES1000-604WH	ES1000-1164WH
Rated Power	300W	600W	1000W	1000W
Battery Type	LiFePo4			
Battery Capacity	268WH	604WH	604WH	1164WH
Single Cell Voltage(V)	3.2	3.2	3.2	3.2
Single Cell Amp (Ah)	21Ah	27Ah	27Ah	52Ah
PACK Serial-Parallel Numbers	4s1p	7s1p	7s1p	7s1p
Charging Power	Mains	AC220-240V 50Hz 55W	AC220-240V 50Hz 170W	Charger 25.5V 7A
	PV	11-30V 4A 60W 5521	12-28V 5A 120W XT60	11-50V 12.5A 450W XT60
AC Output	220V 50Hz 300W	220V 50Hz 600W	220V 50Hz 1000W	
USB Output	USB-A1 QC18W/USB-A2 QC18W/ USB-C PD45W	USB-A1 QC60W/USB-A2 QC30W / USB-C1 PD100W/USB-C2 PD30W	USB-A1 QC18W/USB-A2 QC18W	
DC Output	5521 12.6V 10A 126W	5521*2 12.5V 8A Max 100W	5521 12V3A*4 Max 120W	
Ambient Temperature Range	-10-40 C			
UPS Function	No	YES	No	
Size[mm]L*W*H	L216 x W160 xH196	L236 x W220 xH240	L241 x W235 xH240	L241 x W291 xH290
Net Weight	5.50KGS	9.0KGS	11.0KGS	14.0KGS

## Mobile Power Station



**18KW**  
PV Input



**23.5KWH**  
Capacity



**230V/400V**  
Dual voltage



**12000W**  
Three phase

### ES Series Power Station

### ES Series Three Phase Power Station

Model	ES4000-8KWH	ES6200-11.7KWH	ES6200-16KWH	ES11000-23.5KWH	ES12000-11.7KWH	ES12000-16KWH	ES12000-23.5KWH
Rated Power	4KW	6.2KW	6.2KW	11KW	12KW	12KW	12KW
Battery Type	LiFePo4						
Battery Capacity	8KWH	11.7KWH	16KWH	23.5KWH	11.7KWH	16KWH	23.5KWH
Single Cell Voltage(V)	3.2						
Single Cell Amp (Ah)	314Ah	230Ah	314Ah	230Ah	230Ah	314Ah	230Ah
PACK Serial-Parallel Numbers	8s1p	16s1p	16s1p	16s2p	16s1p	16s1p	16s2p
Charging Power	Mains	AC 230V 50Hz 2200W	AC 230V 50Hz 3300W	AC 230V 50Hz 3300W	AC 230V 50Hz 3300W		
	PV	60-500V 27A 6500W	60-500V 27A 8500W	60-500V 27A 8500W	90-500V 27A 5500W*2 11KW	200-650V 22A 9000W*2 18KW	
AC Output	230V 50Hz 4000W	230V 50Hz 6200W	230V 50Hz 6200W	230V 50Hz 11000W	Single phase 230V/Three phase 400V 50Hz 12000W		
Ambient Temperature Range	-10~40 C						
UPS Function	Support						
Remote monitoring (optional)	WIFI						
Size[mm]L*W*H	L500 x W353 xH853	L500 x W353 xH950	L500 x W353 xH1200	L700 x W380 xH1300	L700 x W380 xH1100	L700 x W380 xH1200	L700 x W380 xH1300
Net Weight	120.0KGS	150.0KGS	170.0KGS	190.0KGS	150.0KGS	170.0KGS	190.0KGS

## Mobile Power Station



10.5KWH

11.7KWH

23.5KWH

### EA Series Power Station (US Standard)

Model	EA6500-10.5KWH	EA7200-11.7KWH	EA12000-23.5KWH
Rated Power	Single Phase 6.5KW	Split Phase 7.2KW Single Phase 6KW	Split Phase 12KW Single Phase 7.2KW
Battery Type	LiFePo4		
Battery Capacity	10.5KWH	11.7KWH	23.5KWH
Single Cell Voltage(V)	3.2	3.2	3.2
Single Cell Amp (Ah)	206Ah	230Ah	230Ah
PACK Serial-Parallel Numbers	16s1p	16s1p	16s2p
Charging Power	Mains	AC 120V 60Hz 2200W	AC 120V 60Hz 2200W
	PV	80-300V 22A 4500W*2 9KW	90-450V 16A 4500W*2 9KW
AC Output	120V 6500W	(L1-L2 240V 7.2KW) (L1-N/L2-N 120V 6KW)	(L1-L2 240V 12KW) (L1-N/L2-N 120V 7.2KW)
Ambient Temperature Range	-10~40 C		
UPS Function	Support		
Remote monitoring (optional)	WIFI		
Size[mm]L*W*H	L700 x W380 xH850	L700 x W380 xH950	L700 x W380 xH1300
Net Weight	130.0KGS	150.0KGS	190.0KGS

## PV Inverter



PV Charging



Pure Sine Wave



Multiple Protection

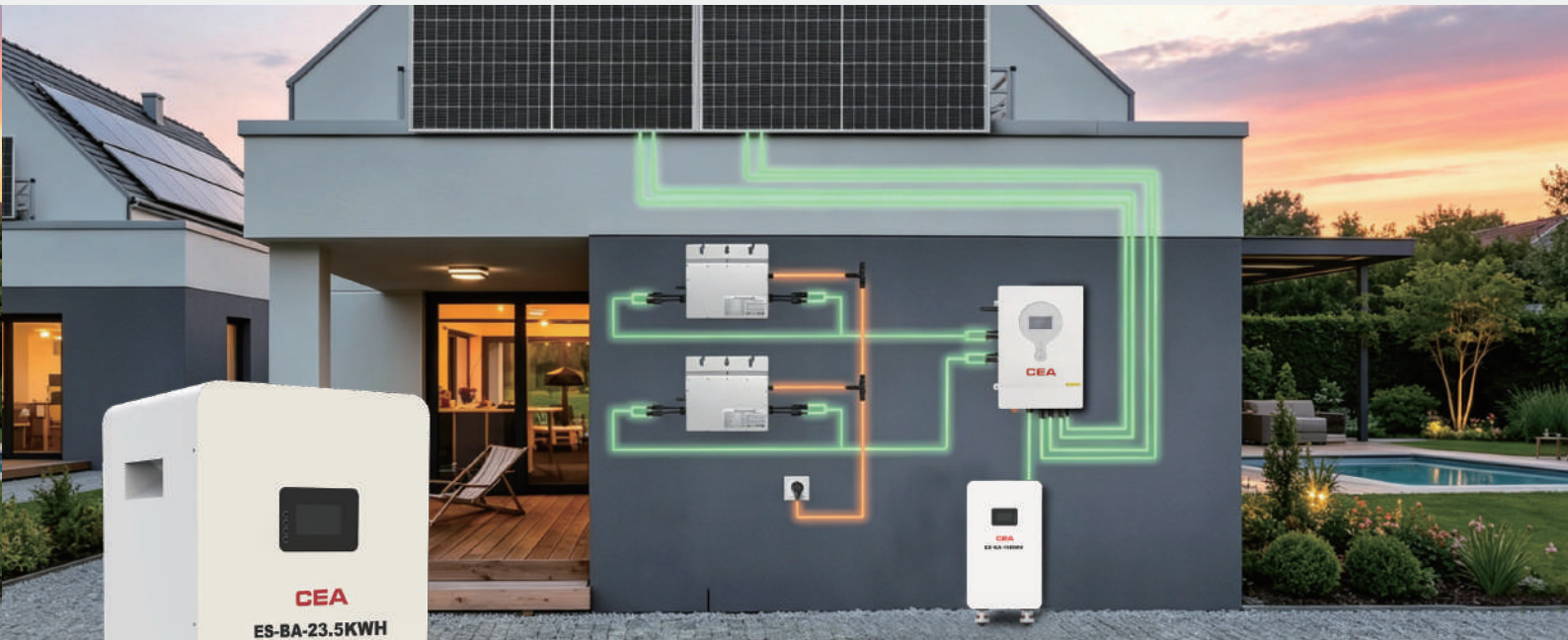


WIFI Module



Product parameter	3600W	6200W	11000W	7200W	10000W	12000W	
Model	EE-INV-3624	EE-INV-6248	EE-INV-11048	EE-INV-7248	EE-INV-10048	EE-INV-12048	
Rated Power	3600W	6200W	11000W	7200W	10000W	12000W	
Peak Power	7200VA	12400VA	22000VA	14400VA	20000VA	24000VA	
Mains Input	Input Voltage Range	170-280VAC±3V			85-140VAC±3V		
	Input Format	L+N+PE			120VacL1+N/L2+N/240VacL1+L2		
	Input Frequency	50Hz/60Hz(Adaptive)					
Output	Output Voltage	220/230/240VAC±5%			120VacL1/N L2+N、 240VacL1/L2		
	Output Frequency	50/60Hz±0.1%					
	Output Waveform	Pure Sine Wave					
	UPS	10ms					
	Mode	Hybrid/Off-grid			Off-grid		
Battery Voltage	Rated Voltage	24V	48V	48V	48V		
	Charging Voltage	28.2V	58.2V	58.2V	58.2V		
PV Input	Max Power	5000W	8500W	5500W*2	4500W*2	5500W*2 6000W*2	
	Charging Method	MPPT	MPPT	Dual MPPT	Dual MPPT		
	Voltage Range	60-450V	60-450V	90-500V	90-450V		
	PV Input Current	15A	27A	18A*2	16A*2	22A*2	22A*2
	PV Charging Current	100A	120A	150A	150A	200A	220A
	Best Input Voltage	360-430V	360-430V	300-400V	300-400V		
Communication Port	RS485	BMS Communication					
	RS232	WIFI Module					
Size[mm]L*W*H	L430 x W373 xH197	L494 x W383 xH195	L570.8 x W500 xH148.2	L580 x W359 xH127	L650 x W420 xH132	L650 x W420 xH132	
Net Weight	6.40KGS	8.80KGS	15.0KGS	15.90KGS	24.50KGS	24.50KGS	

## ES Battery Pack



**Bluetooth & WiFi Connection**



**Safe & Explosion-Proof, Durable & Reliable**



**Support Parallel Connection**



**Fast Charging**

Product parameter	8KWH	11.7KWH	16KWH	23.5KWH
Model	ES-BA-8KWH	ES-BA-11.7KWH	ES-BA-16KWH	ES-BA-23.5KWH
Type	Mobile			
Battery Type	LiFePo4			
Color	Customized			
Battery Capacity	8KWH	11.7KWH	16KWH	23.5KWH
Single Cell Voltage(V)	3.2			
Single Cell Amp (Ah)	314Ah	230Ah	314Ah	230Ah
PACK Serial-Parallel Numbers	8s1p	16s1p	16s1p	16s2p
Rated Voltage	25.6V	51.2V	51.2V	51.2V
Max Charge Current	150A	150A	150A	250A
Max Discharge Current	150A	200A	200A	250A
Support Paralleled Battery Expansion	Max 16 pcs			
Ambient Temperature Range	-10~40 C			
Storage Temperature	0~30 C			
Storage Humidity	0~95%			
Bluetooth/WIFI APP Monitor	Support			
Communication Method	CAN/485			
Protection	Over Charge/Over Discharge/Over Current/Short-circuit/Over Temperature			
IP Rate	IP20			
Size[mm]L*W*H	L355 x W300 x H700	L400 x W300 xH930	L430 x W300 xH930	L643 x W300 xH1100
Net Weight	70.0KGS	90.0KGS	110.0KGS	180.0KGS

## LiFePO4 Battery Pack



Efficient Power Supply



Long Life Cycle,  
Cost-saving



Safe and  
Eco-friendly



Adapt to Harsh  
Environments

Product parameter	704WH	1408WH	1920WH	2636WH
Model	EA-BA-704WH	EA-BA-1408WH	EA-BA-1920WH	EA-BA-2636WH
Color	Black			
Battery Type	LiFePO4			
Battery Capacity	704WH	1408WH	1920WH	2636WH
Single Cell Voltage(V)	3.2			
Single Cell Amp (Ah)	55Ah	55Ah	150Ah	206Ah
PACK Serial-Parallel Numbers	4s1p	4s2p	4s1p	4s1p
Rated Voltage	12.8V			
Max Charging Current	55A	110A	150A	200A
Max Discharging Current	55A	110A	150A	200A
Ambient Temperature Range	-10~40 C			
Storage Temperature	0~30 C			
Storage Humidity	0~95%			
Protection	Overcharge/Overdischarge/Overcurrent/Short-circuit/Over Temperature			
IP Rate	IP54			
Size[mm]L*W*H	L231 x W145 xH211	L332 x W171 xH221	L502 x W187 xH242	L522 x W238 xH218
Net Weight	7.40KGS	11.0KGS	15.0KGS	19.0KGS

## Manned Electric Cart



**500KG**  
Load Capacity



**25.6V 691WH**  
Battery Capacity



**10°**  
Climbing Angle



**0-3.5Km/H**  
Travel Speed

### Product parameter

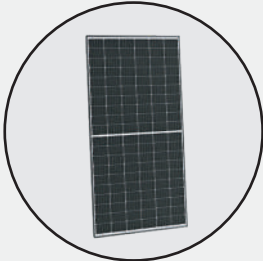
### Load Capacity 500KG

Model	EH-TS-691A	EH-TS-F1-691A
Load Capacity	500KG	
Charging Method	Wall Charge AC100-240V 50/60Hz 294W	
Battery Capacity	LiFePO4 25.6V 691WH	
Motor Power	8 inch 24V 192W 110rpm Brushless Motor	
Drive Method	Dual-motor Rear-wheel Drive	
Travel Speed	0-3.5Km/H	
Climbing Angle	10°	
Travel Direction	Drive/Reverse	
Control Method	Push Switch	
Starting Method	Key Switch	
Braking Method	Electric Brakes/Emergency Stop	
Status Indicator	Support	
Power Level Display	Support	
Product Dimension(mm) L*W*H	1880*800*1300	
Package Dimension(mm)L*W*H	2000*920*860	
N.W.(kg)	94Kg	114Kg
G.W.(kg)	120Kg	140Kg

# SCHEMATIC DIAGRAM OF HOUSEHOLD ENERGY STORAGE CONNECTION



Mains electricity



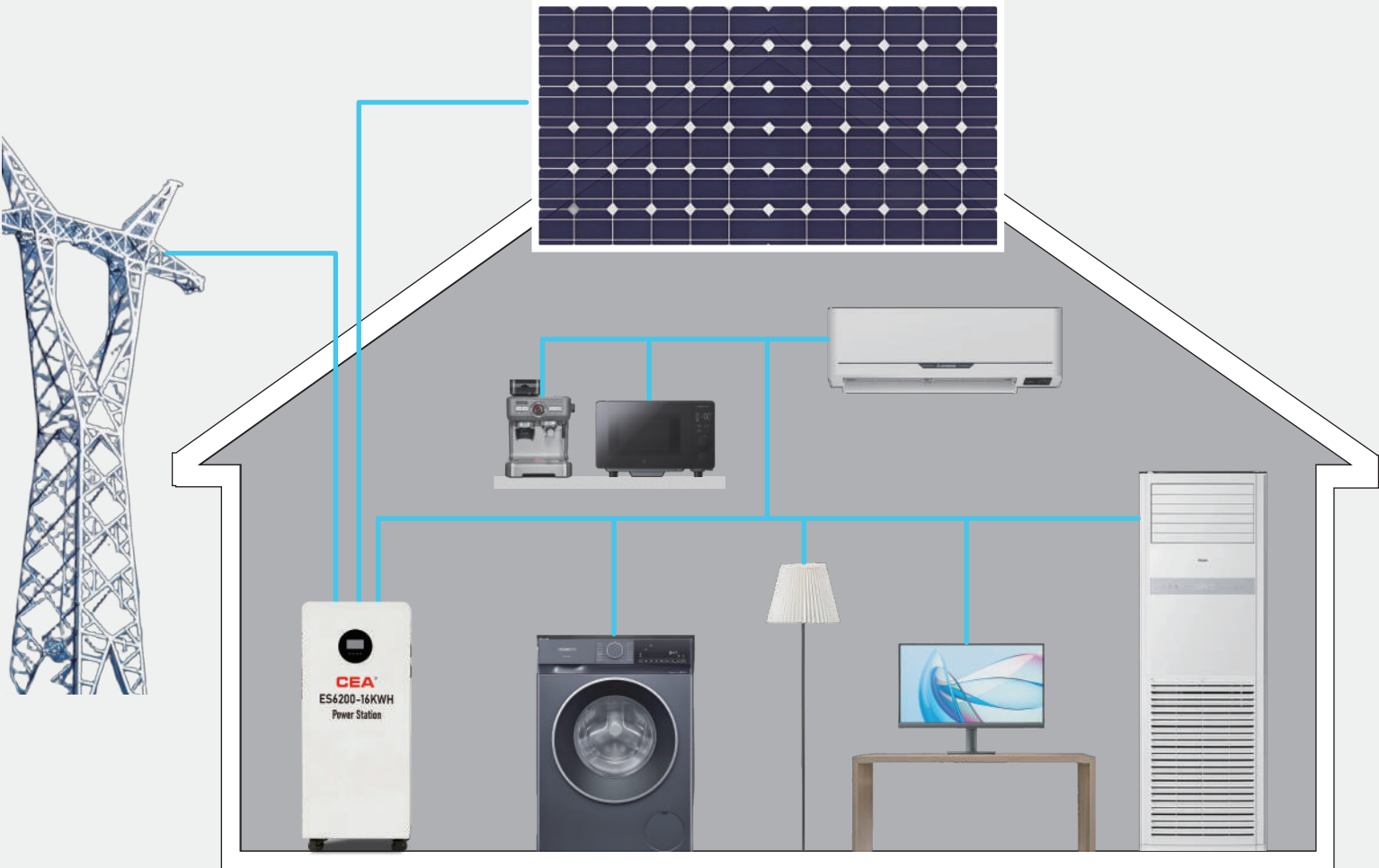
Photovoltaic power generation



Energy storage



Load power consumption



# CEA Portable Power Station

## Application



# CEA Portable Power Station

## Power supply duration of equipment



Drone(40Wh)



Projector(60W)



Laptop(58Wh)



FAN(40W)



Smart Speaker(10W)



Car Refrigerator(60W)



Microwave  
Oven(1300W)



Lamps(30W)



TV(110W)



Coffee Maker  
(1000W)



Percussion Drill  
(1080W)



Rice Cooker  
(1000W)



Camera(7.3Wh)



Refrigerator(65W)



Hair Drier(1600W)



Phone(11.8Wh)



Ground Crusher(1200W)



Electric Saw(1200W)



# CEA®

CEA electric Co.,Ltd



## CEA Mobile Power Station



**CEA**  
CEA electric co.,ltd

CEA Mobile Power Station is a reliable battery-powered storage system coming in different sizes and power capacities to meet your needs. With multiple outlets like AC, DC, carport and USB, you can charge all your devices like phones, laptops, refrigerator, CPAP, heater and more devices.

The CEA portable power station is a dependable backup power source that is easy to use and lasts for years with almost no maintenance required. It always has your back and leaves you peace of mind when you're camping, traveling in an RV or experiencing a power outage.

Anlen Tan Chairman

**CEA®**

CEA ELECTRIC CO.,LTD.  
CEA GROUP INTERNATIONAL CO.,LTD  
+86 139 0587 9233 +86 577 6178 9668  
+86 577 6178 9669 anlen@ceaworld.com  
www.ehpps.com  
No.198, Lingyu Mansion, Zhucheng West Road,  
Panshi Town, Yueqing City, Zhejiang, China



Catalog  
Download



**CEA®**

**CEA ELECTRIC CO.,LTD  
WENZHOU LINGYU IMPORT AND EXPORT CO., LTD  
FUTURE GROUP INTERNATIONAL COMPANY LTD**

ADD:No. 6 Yingyang Road, Yingquan Economic  
Development Zone, Fuyang Anhui China.  
TEL: +86 588 7159989  
www.ehpps.com  
E-mail:anlen@ceaworld.com